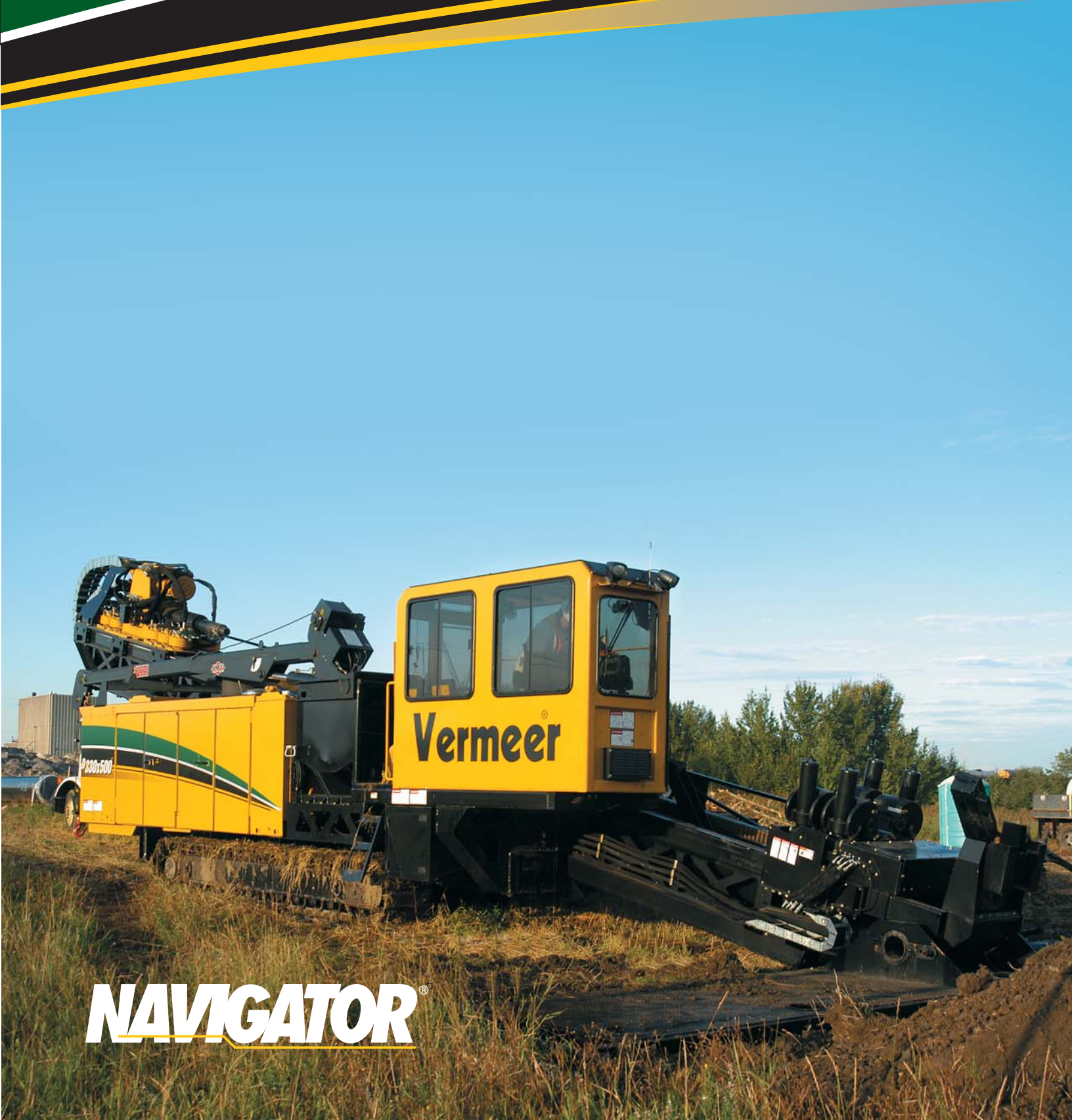


Vermeer[®]

Horizontal Directional Drill

D 330x500



NAVIGATOR[®]

NAVIGATOR®

D330x500

The New Way The Proven Way.

When it comes to horizontal directional drills, Vermeer leads the industry with more drills at work around the world than any other manufacturer. Our full line of jumbo drills turns heads when it comes to production, quality, and reliability. The all-new Vermeer® D330x500 NAVIGATOR® HDD is no exception.

Because, the D330x500 is within legal dimensions in transport mode, it meets the needs of the industry for increased flexibility and ease of transport any time of day. The unit also offers a quick setup time because all components, including the engine, hydraulics, operator's cab, crane, and breakout system, are part of the machine.

With 50,000 ft-lb of rotational torque for drilling in difficult ground formations and turning large backreamers, and 330,000 pounds of thrust/pullback force, the D330x500 packs an impressive amount of muscle for those long and large-diameter drilling projects.

The machine also increases efficiency by allowing a single operator to run everything from the climate-controlled operator's station. All functions, including transport, drilling controls, crane, and drilling fluid controls, are operated from the cab of the D330x500.

Drill pipe up to 32 feet (9.75 m) in length can be utilized by the D330x500. And, no matter where the jobsite, the Vermeer worldwide dealer network stands ready to provide dependable service and support.



Parts and Service Support. Vermeer is a leader in reliability and support. Your local Vermeer dealership provides unsurpassed service and parts support no matter where the jobsite.



Highway Transport. Although the D330x500 will be an overweight load, the unit can be transported any time of day because it's within legal dimensions in the transport mode. The D330x500 features an integral automated catwalk.



HORIZONTAL DIRECTIONAL DRILLING SYSTEM



Self Contained Design. The D330x500 offers quick setup time. All components, including the crane and cab, are part of the machine and requires minimal setup time. Only the high pressure fluid line and the corresponding electrical line require setup.



All functions operated from the cab. The D330x500 helps eliminate the need to operate transport, drilling controls, crane and drilling fluids remotely, or to move to a different location on the machine for various functions. This increases manpower efficiency by allowing a single operator to run everything from the operator's station. Also provides room for a second crew member to consult in the drilling operation.



50,000 ft/lbs of torque High torque for drilling in difficult ground formations and turning large back reamers.

D330x500 Specifications

Drill Unit

Width: 100" (254 cm)
Height: 134" (340 cm)
Weight w/o drill rod: 90,000 lbs (40,823 kg)
Length: 53.3' (16.25 m)

Operational

Max spindle torque:
@ 44 rpm: 50,000 ft-lb (67,800 Nm)
@ 59 rpm: 37,500 ft-lb (50,800 Nm)
@ 88 rpm: 25,000 ft-lb (33,900 Nm)
Max spindle speed: 88 rpm
Thrust (actual): 330,000 lb (149,685 kg)
Pullback (actual): 330,000 lb (149,685 kg)
Min bore diameter: 6.5" (17 cm)
Max ground drive speed: 3 mph (4.8 km/h)
Max carriage speed: 56 ft/min (17m/min)
Drill rack angle: 13 - 30°
Remote Lockout: Yes

Drilling Fluid System

Utilizes an auxillary stand-alone fluid system

Features

Breakout system
Drilling Lights
Flow Indicator
BP600 display with built in diagnostic tool
Stakedown System - Pad mount
Cab: Integrated 2-person all climate

Power

Engine: Caterpillar C-15 TIER III
Gross power rating: 540 hp (403 kW)
Net power rating: 486 hp (363 kW)
Rated rpm: 2100 rpm

Drill Stem

Type: Standard oil field
Length: Up to 32 ft (9.8 m)
Pipe diameter: 4.5" - 6" (11.4 - 15.2)

Fluid Capacities

Fuel tank: 210 gal (795 L)
Hydraulic Reservoir: 200 gal (757 L)

Vermeer offers everything from specialty tooling to training and technology.



At any given time, more than half of all horizontal directional drilling units in the world are Vermeer NAVIGATOR machines. To help ensure smooth-running operations, Vermeer offers everything you need – from one-day training seminars to computer software – for more efficient bore planning and performance.

The Vermeer Cutting Edge Group produces some of the world's most popular HDD tooling, specialty tooling, and custom-made tooling. Call for a FREE HDD accessories catalog! **Call 1-866-VERMEER or view online at www.vermeer.com.**



Vermeer drilling fluid management systems provide the horizontal directional drill with quality mud mixing in a minimum amount of time. Smaller systems are self-contained on a mounting skid. Larger systems are available preassembled on mounting platforms to provide drilling operations with greater versatility.



Wetting agents, polymers, and bentonites — you need the right mix to get through the tough bores. Vermeer offers specially formulated nontoxic polymer and bentonite drilling fluids to get the job done.



Locating systems are developed by working closely with the world's premier locating companies. Vermeer helps keep you on the leading edge of technology by offering a variety of options designed to meet the needs of varying applications.



Vermeer features a global team of NAVIGATOR HDD solutions specialists that provide localized training and operation expertise designed for the conditions in your area.



One-day horizontal directional drilling seminars offered by industry experts at a Vermeer dealership near you focus on current issues in the horizontal directional drilling industry.



The efficient, economical way to plan a bore. Vermeer ATLAS BORE PLANNER® software heightens professionalism by aiding the operator in preplanning the bore and comparing the planned bore path with the actual bore path. The Vermeer FieldCalc™ system combines software and a hand-held computer to provide job site calculations, including setback distance, pullback time, and point-to-point calculations.

Your Complete Global Service Provider for Quality Parts and Service.



Get the parts and service edge. In addition to providing quality equipment, Vermeer delivers top-quality parts and superior services. Vermeer parts are manufactured to exacting specifications to help keep your Vermeer equipment running trouble-free and at OEM specifications.



Vermeer offers factory-certified training programs to its dealer network to ensure that the most current service procedures are presented to the service personnel of your Vermeer dealer.



Genuine Vermeer parts are precision crafted to match your Vermeer equipment EXACTLY. This ensures that your system will run as smoothly as possible, with the least amount of service and maintenance.

Vermeer®

Vermeer Manufacturing Company

1210 Vermeer Road East
P.O. Box 200
Pella, Iowa 50219 U.S.A.
Phone: (641) 628-3141
Fax: (641) 621-7734
International fax: +1 (641) 621-7730
www.vermeer.com

Call toll-free 1-888-VERMEER

1-888-837-6337 (U.S.A. only)

Europe, Middle East and Africa:

P.O. Box 323
4460 AS Goes
Netherlands
Phone: +31 113 272700
Fax: +31 113 272727

Equipment shown is for illustrative purposes only and may display optional accessories or components. Please contact your local Vermeer dealer for more information about machine specifications. Vermeer Manufacturing Company reserves the right to make changes in engineering, design and specifications, add improvements, or discontinue manufacturing at any time without notice or obligation. VERMEER, VERMEER LOGO, NAVIGATOR, ATLAS BORE PLANNER and FIELD CALC are registered trademarks of Vermeer Manufacturing Company in the U.S. and/or other countries. Copyright © 2006 Vermeer Manufacturing Company. All Rights Reserved.